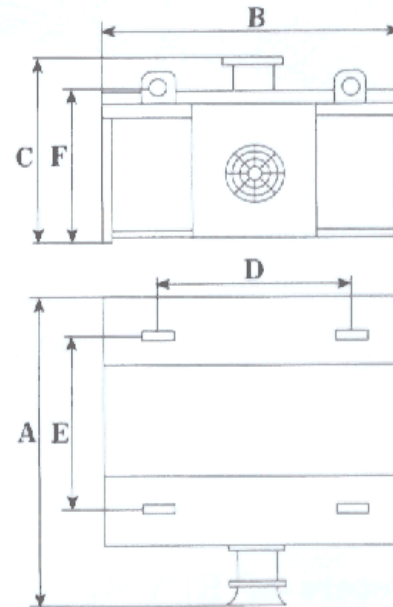


Sold by: International Magnetic Solutions Pty Ltd
 21 Jura Street, Heatherbrae, NSW 2324, Australia.
 Ph. +61 2 4987 3912 Fax +61 2 4987 7651

- Especially suitable for outdoors installation and different kinds of dust environment.
- The electro wire core has been fabricated under special treatment, which makes the equipment to have unique features like anti-oxidation, anti-rust, better insulation, large area for heat releasing low temperature rise, and better refrigeration performance, etc.
- Equipped with fan-cooling system.
- Optional magnetic force at the suspension height rated: 500Gs 700Gs, 900Gs, 1200Gs, 1500Gs etc.



Technical Parameters of RCDA

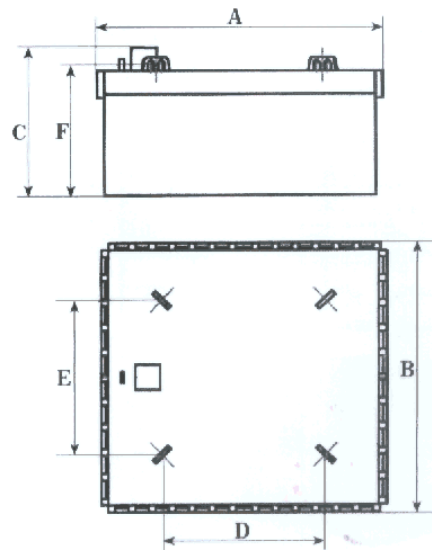
Model	Item Spec.	Cooling Method	Belt Width mm	Suspension Height Rated(SHR) H mm	Excitation Power kw	Magnetic Intensity at SHR mT	Cooler Power kw	Outline Dimensions mm						Weight kg
								A	B	C	D	E	F	
RCDA-6		Fan Cooling	650	200	<3	>70	0.37	1273	850	475	743	788	387	640
RCDA-8			800	250	<4.5	>70	0.55	1527	1050	578	920	955	495	1300
RCDA-10			1000	300	<6	>70	0.55	1727	1150	651	1013	1074	568	1690
RCDA-12			1200	350	<8.5	>70	1.1	2052	1500	738	1351	1434	665	2435
RCDA-14			1400	400	<9.5	>70	1.1	2243	1700	791	1550	1634	718	3535
RCDA-16			1600	450	<14	>70	1.5	2505	1900	810	1750	1842	742	5170
RCDA-18			1800	500	<16.5	>70	4.4	2770	2300	1160	1990	2040	1100	9000

(For Reference Only)



Sold by: International Magnetic Solutions Pty Ltd
21 Jura Street, Heatherbrae, NSW 2324, Australia.
Ph. +61 2 4987 3912 Fax +61 2 4987 7651

- Suitable for different kinds of material feeding conditions, especially for worse conditions.
- Small volume. Light weight. Compact structure.
- Maintenance free. No noise.
- Better heat releasing. Low temperature rise.
- Optional magnetic force at the suspension height rated: 500Gs, 700Gs, 900Gs, 1200Gs, 1500Gs etc.



Technical Parameters of RCDB

Model	Item Spec.	Cooling Method	Belt Width mm	Suspension Height Rated(SHR) H mm	Excitation Power kw	Magnetic Intensity at SHR mT	Outline Dimensions mm						Weight kg
							A	B	C	D	E	F	
RCDB-6		Cross-ventilation	650	200	≤3	≥70	1034	958	560	600	600	480	800
RCDB-8			800	250	≤4	≥70	1241	1158	665	750	750	580	1250
RCDB-10			1000	300	≤7.5	≥70	1441	1358	740	950	950	670	2100
RCDB-12			1200	350	≤9.5	≥70	1701	1608	840	1150	1150	770	3000
RCDB-14			1400	400	≤12	≥70	1901	1808	935	1350	1350	867	4500
RCDB-16			1600	450	≤14.5	≥70	2108	2008	1015	1470	1550	947	5850
RCDB-18			1800	500	≤18	≥70	2310	2208	1150	1550	1800	1100	9500

(For Reference Only)